

PRODUCT SPECIFICATION

SAFETYWARE 9200 Dual Cartridge Silicone Half Face Air Purifying Respirator

- Textured silicone face seal brings comfort, stability, durability and good contact in presence of moisture.
- A large inner space prevents uncomfortable contact between the mouth and nose with the facepiece.
- Quarter-turn strap change mechanism allows for easy maintenance.
- Dual-mode head harness adjusts easily for either standard or drop-down mode.
- The screw-type Exhalation Valve Cover directs exhaled breath.
- A wide strap provides a comfortable fit and extends the lifespan of the strap.
- Polycarbonate bayonet connection ensures no wear throughout the mask's service life.
- Approved by SIRIM-DOSH.

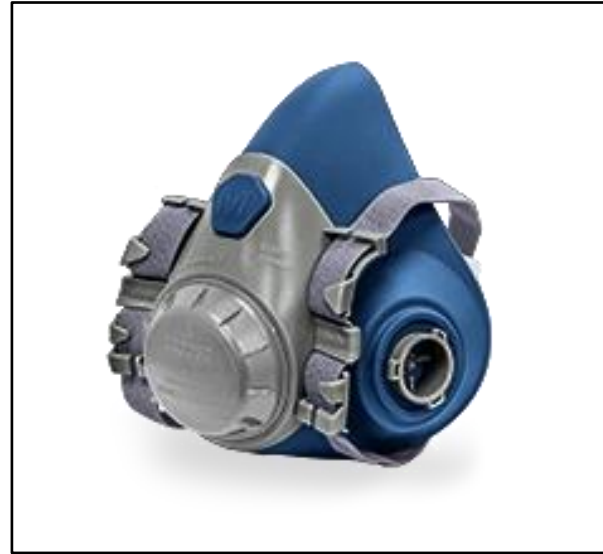
APPLICATIONS

- Welding
- Wood working
- Mining
- Pharmaceutical Manufacturing
- Environmental Cleanup
- Laboratory Work
- Emergency Response
- Construction

TECHNICAL DATA

MATERIAL	Face seal, inhalation and exhalation valve : Silicone
	Exhalation valve cover and neck buckle : ABS
	Headband : Braided rubber
COLOR	Blue
STANDARD	BS EN 140 : 1998 AS/NZS 1716:2012
DOSH APPROVAL NO.	9200-S : JKKP/2024/12-01/06/00015/0001 9200-M : JKKP/2024/12-01/06/00015/0002 9200-L : JKKP/2024/12-01/06/00015/0003
CARTON DIMENSION	44 (L) x 31 (W) x 16 (H) cm

Item Code: 9200



ITEM CODE

ITEM CODE	SIZE
9200-S	S
9200-M	M
9200-L	L

SAFETYWARE SDN. BHD. (632971-X)

Plot 237, Lengkok Perindustrian Bukit Minyak 3,
Bukit Minyak Industrial Estate,
14100 Simpang Ampat, Penang, Malaysia

Tel : +604-5023 882 | Fax : +604-5081 882
www.safetyware.com | info@safetyware.com

It is the product users' responsibility to conduct all the appropriate evaluations & testing to determine the suitability of SAFETYWARE products for use in a particular environment or purpose. SAFETYWARE disclaims all warranties other than as expressly provided.

Date created: 26/01/2024

Revision: 01

Date revised: 14/02/2024