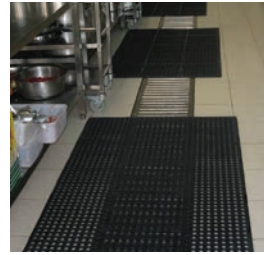
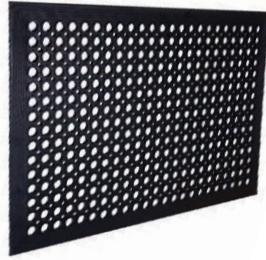


A roll of safety tape with alternating yellow and black stripes is shown on a diamond plate metal surface. The tape is partially unrolled, showing its adhesive backing. The background is a textured metal surface with a repeating diamond pattern.

Safetyware
SAFETYWARE GROUP
Responsibility & Care

**FLOOR
SAFETY**



Drainage Hole Anti-Fatigue Floor Mat

Item Code	Material	Size	Colour	Unit
AFM280BL3X5	Solid Rubber	90cm x 150cm	Black	EA

- Made with high quality solid rubber which is durable and provide good traction
- Lightweight design with excellent drainage
- Wide, ribbed molded-in safety edges
- Overall thickness of 12mm
- Ideal for both dry & wet environment with temperature range between -10°C to +50°C
- Suitable for general manufacturing, food processing, food service and kitchen



Anti-Fatigue Floor Mat

Item Code	Material	Size	Colour	Unit
AFM380BY2X3	Surface: Polyvinyl Chloride (PVC), Foam: Nitrile Rubber (NBR)	60cm x 90 cm	Black with yellow border	EA
AFM380BY3X5	Surface: Polyvinyl Chloride (PVC), Foam: Nitrile Rubber (NBR)	90cm x 150cm	Black with yellow border	EA
AFM380BY3X10	Surface: Polyvinyl Chloride (PVC), Foam: Nitrile Rubber (NBR)	90cm x 305cm	Black with yellow border	EA
AFM380BY3X50	Surface: Polyvinyl Chloride (PVC), Foam: Nitrile Rubber (NBR)	90cm x 1500cm	Black with yellow border	EA

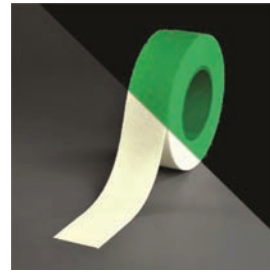
- Made with high quality PVC surface with tough abrasion and chemical resistant
- Diamond-Plate pattern for improved traction and laminated with soft NBR sponge base which offers excellent anti-fatigue performance
- Antistatic surface & back with surface resistivity of 10⁶ - 10⁹ ohms
- Comes with a grounding snap at the corner of the mat (Note: Mat must be grounded with a ground cord and workers must wear ESD/Conductive Shoes or Heel Grander)
- Ideal for dry environment with temperature range between -30°C to +60°C
- Suitable for lab / pharmaceutical, food processing, hospitality, fulfillment, general manufacturing, automotive, aerospace, electronic and semiconductor



Fabric-Top Anti-Fatigue Floor Mat

Item Code	Material	Size	Colour	Unit
AFM480GR2X3	PET Grid Carpet + Soft NBR Foam + PVC Back	60cm x 90cm	Dark Grey	EA
AFM480GR3X5	PET Grid Carpet + Soft NBR Foam + PVC Back	90cm x 150cm	Dark Grey	EA
AFM480GR2X5	PET Grid Carpet + Soft NBR Foam + PVC Back	60cm x 150cm	Dark Grey	EA

- Made with high quality PET grid carpet surface which is effective in removing dirt and moisture from shoes
- Scrape and trap dirt
- Clean shoes to extend floor life
- Reduce slips, trips and falls from slip hazards on wet floors
- Laminated with soft NBR sponge base which offers excellent anti-fatigue performance
- Overall thickness of 18mm
- Ideal for dry environment with temperature range between -10°C to +50°C
- Suitable for general manufacturing, lab / pharmaceutical, hospitality and commercial



Safe-Track Anti-Slip Floor Tape

Item Code	Material	Size	Colour	Unit
ASTPVC80BK050	Abrasive Mineral on PVC Film	50mm x 18m	Black	ROLL
ASTPVC80YL050	Abrasive Mineral on PVC Film	50mm x 18m	Yellow	ROLL
ASTPVC80BY050	Abrasive Mineral on PVC Film	50mm x 18m	Black + Yellow Stripe	ROLL
ASTPVC80PL050	Abrasive Mineral on PVC Film	50mm x 18m	Photoluminescent	ROLL

- Made with high quality abrasive minerals applied to self-adhesives PVC carrier
- Offers quick and durable anti-slip performance in many different conditions
- The abrasive coating on the tape provides excellent level of grip and friction
- Can be applied onto almost any surface and instantly provides an anti-slip surface that is ready to walk on
- Available in colours - Black, Yellow, Black + Yellow stripes, and Photoluminescent (glow in the dark)
- Standard length of 18 meters per roll

Anti Slip Hazard Tape



FMS038



FMS039

Item Code	Tape	Size	Colour	Unit
FMS038	Caution / Watch Your Step	150mm x 610mm	Yellow/Black	EA
FMS039	Attention Danger	75mm x 18.3m	Yellow/Black	ROLL

- Hi-viz, anti-slip solutions for the workplace
- Provide sure foot levels of gripping in any situation as it is not easily clogged by dirt, dust or other contaminants
- Provide durable use once applied correctly as it is extremely tough and not readily affected by chemicals
- Custom options possible
- Tested to German DIN, EU/Australian Pendulum and American ASTM standards



FES001



FES006



FES016



FES019

Fire Exit Marker Sign

Item Code	Material	Size	Colour	Unit
FES001	Heavy Duty Vilyn + Floor Lamination	450mm x 450mm	White + Green	EA
FES006	Heavy Duty Vilyn + Floor Lamination	450mm x 450mm	Black + Yellow	EA
FES016	Heavy Duty Vilyn + Floor Lamination	450mm	White + Red	EA
FES019	Heavy Duty Vilyn + Floor Lamination	450mm	White + Red + Black	EA

- Highlights exit points in a building to ensure it is easy to spot and is kept clear
- Applies instantly and easily as it is in one whole piece



FMS001



FMS016



FMS022



FMS029

Floor Marking Sign

Item Code	Material	Size	Colour	Unit
FMS001	3Heavy Duty Vilyn + Floor Lamination	450mm	White + Blue	EA
FMS016	Heavy Duty Vilyn + Floor Lamination	450mm	White + Red + Black	EA
FMS022	Heavy Duty Vilyn + Floor Lamination	450mm x 450mm	Yellow + Black	EA
FMS029	Heavy Duty Vilyn + Floor Lamination	450mm	White + Red + Black	EA

- Use in factory warehouses and buildings where restrictions and safety notifications need to be highlighted
- Easy and require no downtime to apply
- Vibrant surface print
- Top laminate for durability
- Use in factory warehouses and buildings where restrictions and safety notifications need to be highlighted



FPLS001



FPLS006



FPLS016



FPLS019

Floor Photoluminescent Sign

Item Code	Material	Size	Colour	Unit
FPLS001	Photoluminescent Sticker + Floor Lamination	450mm x 450mm	Photoluminescent + Green	EA
FPLS006	Photoluminescent Sticker + Floor Lamination	450mm X 450mm	Photoluminescent + Yellow + Black	EA
FPLS016	Photoluminescent Sticker + Floor Lamination	450mm	Photoluminescent + Red	EA
FPLS019	Photoluminescent Sticker + Floor Lamination	450mm	Photoluminescent + Red + Black	EA

- High visibility and durability
- Can be charged by natural or artificial lights
- Sufficient afterglow performance
- Easy to apply on most flat surfaces, cost effective than using powered signs



FWM001Y



FWM002Y



FWM003Y



FWM004Y



FWM005Y



FWM006Y

Floor Warehouse Marker Sign

Item Code	Material	Size (W x L)	Colour	Unit
FWM001Y	Heavy Duty Vilyn + Floor Lamination	300mm x 300mm	Yellow	EA
FWM002Y	Heavy Duty Vilyn + Floor Lamination	300mm X 200mm	Yellow	EA
FWM003Y	Heavy Duty Vilyn + Floor Lamination	200mm X 200mm	Yellow	EA
FWM004Y	Heavy Duty Vilyn + Floor Lamination	254mm X 203mm	Yellow	EA
FWM005Y	Heavy Duty Vilyn + Floor Lamination	90mm x 90mm	Yellow	EA
FWM006Y	Heavy Duty Vilyn + Floor Lamination	90mm x 90mm	Yellow	EA

- Excellent durability levels that are required in a busy warehouse or factory
- Easy application and cost effective.
- With minimal to no downtime
- Wide color choices as it availables in green, blue, red and photoluminescent