



EC TYPE-EXAMINATION CERTIFICATE (EC Directive 89/686/EEC)

Number EC73429

Notified body number: 2019

NOTIFIED UNDER ARTICLE 9 OF EC DIRECTIVE 89/686/EEC

Issued to:

Portwest Clothing Ltd.

**Fields End Business Park,
Thurnscoe,
South Yorkshire,
S63 0JF,
United Kingdom**

Eastport Ltd (Bangladesh)

**Plot Nos. 85 & 86
Comilla Export Processing Zone
Old Airport area
Comilla-3500
Bangladesh**

It is certified that the manufacturer's technical file and the PPE detailed below have been assessed and found to be in accordance with EC Directive 89/686/EEC for PPE of Complex Design.

PPE Product:

PORTWEST® ARAFLAME™ Style AF73 Coverall. constructed with a 93% Meta-Aramid, 5% Para-Aramid, 2% Carbon fibre 150g/m² woven fabric in Orange Royal Khaki or Navy. The garments feature a brass zip front fastening, side pockets, rear hip pockets patch chest pockets secured with a concealed brass zip opening and retroreflective tape sewn on about each arm and leg and over the shoulder, with cuffs secured with Velcro tabs. The garments are available in 12 sizes.

When examined the PPE satisfied the Basic Health and Safety requirements of the directive and the following Standards,

EN ISO 11612:2008 A1 A2 B1 C1 F1
EN 1149-5:2008 (EN 1149-3)
ASTM F1959M-14 ATPV 5.9 cal/cm²

The manufacturer's information notices detailed within technical the file (105-USP) in English have been assessed and found to have addressed all of the relevant requirements of the standards. However the detailed content of the notice is the responsibility of the manufacturer as are translations into other languages.

CE
2019



Authorised By:
Dale Brockbank
Materials Testing Manager

Issue 2 08 June 2016

Certified since 08 June 2016

WYMTS Reference : 73429

- ❖ This Certificate remains the property of West Yorkshire Materials Testing Service whom it must be returned to on request.
- ❖ This certificate is issued on the strict condition that appropriate checks on manufactured PPE, as detailed in Article 11 of the Directive are implemented and maintained while the model is in production.





EC TYPE-EXAMINATION CERTIFICATE (EC Directive 89/686/EEC)

Number EC73429

Notified body number: 2019

NOTIFIED UNDER ARTICLE 9 OF EC DIRECTIVE 89/686/EEC

ALL TEST DOCUMENTS MUST BE INCLUDED IN THE TECHNICAL FILE

Requirement	Assessment	Technical Documentation
Technical File	Technical file in order with PPE Directive (89/686/EEC)	AF73 dated 02.03.16, & supplementary documents including EC application form.
EN 340/ISO 13688 Innocuousness	Garment meets all requirements	WYMTS 63351-01, 63351-02 Oekotex BEWO 063152
EN 340/ISO 13688 Ergonomics and sizing	Garment meets all requirements	Garment assessed
EN ISO 11612	Class A1 A2 B1 C1 F1	WYMTS 66444 WYMTS 68080 BV TR2300.50633 WYMTS 42685-01
ASTM F1959	ATPV 5.9 cal/cm ²	Aitex 2015EP2013 WYMTS 74989
EN 1149-5	EN1149-3	WYMTS 66960
Product Markings	Marking meets the requirements of EN 340:2003 EN ISO 13688:2013	Detailed in Technical file




Authorised By:
 Dale Brockbank
 Materials Testing Manager

Issue 2 08 June 2016

Certified since 08 June 2016

WYMTS Reference : 73429

- ❖ This Certificate remains the property of West Yorkshire Materials Testing Service whom it must be returned to on request.
- ❖ This certificate is issued on the strict condition that appropriate checks on manufactured PPE, as detailed in Article 11 of the Directive are implemented and maintained while the model is in production.





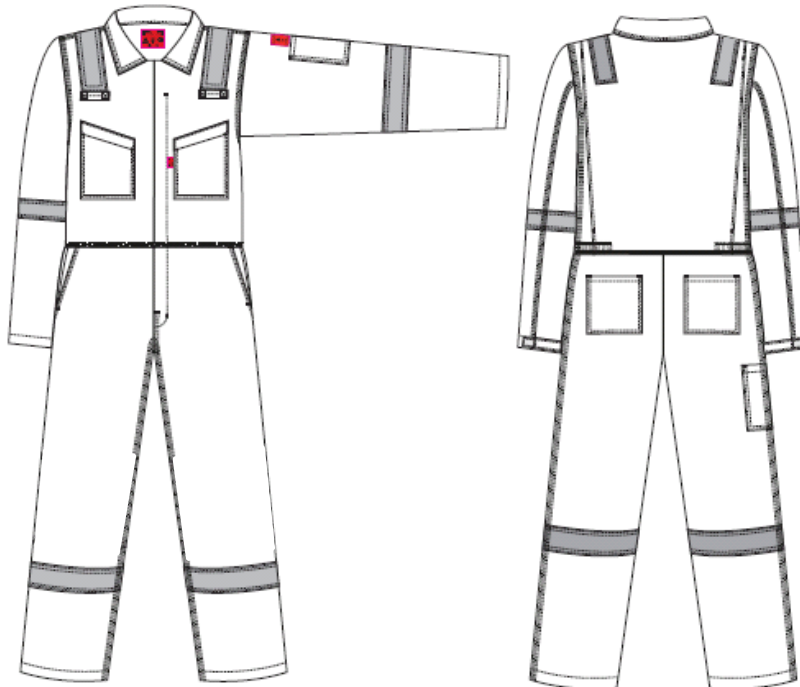
EC TYPE-EXAMINATION CERTIFICATE (EC Directive 89/686/EEC)

Number EC73429

Notified body number: 2019

NOTIFIED UNDER ARTICLE 9 OF EC DIRECTIVE 89/686/EEC

Drawing of Garment



CE
2019

Authorised By:
Dale Brockbank
Materials Testing Manager

Issue 2 08 June 2016

Certified since 08 June 2016

WYMTS Reference : 73429

- ❖ This Certificate remains the property of West Yorkshire Materials Testing Service whom it must be returned to on request.
- ❖ This certificate is issued on the strict condition that appropriate checks on manufactured PPE, as detailed in Article 11 of the Directive are implemented and maintained while the model is in production.



5380