

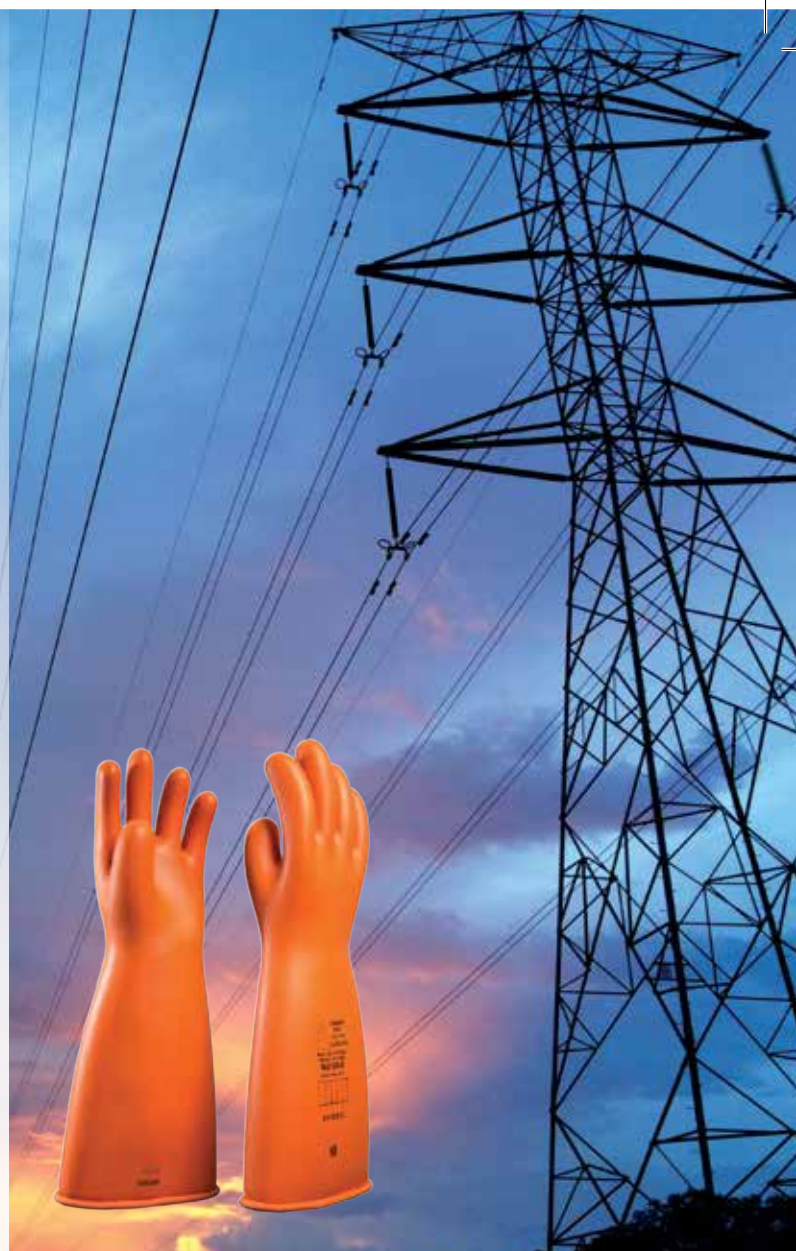
# NOVAX

## ELECTRIAL SAFETY

### NOVAX® RUBBER INSULATING GLOVE

NOVAX® is now placed in a strong position to achieve its vision of being the preferred partner in the electrical safety industry.

To ensure superior performance, NOVAX® rubber insulating gloves are produced from specially compounded latex that offers excellent dielectric properties combined with great flexibility, strength and durability. We electrically test every glove prior to shipment. Each batch of gloves is also subjected to a battery of physical and electrical tests. The skills and experience in latex dipping process acquired over more than 20 years resulted in the development of NOVAX® rubber insulating gloves, which easily meet and even surpass the requirements of ASTM D120, NFPA 70E and EN 60903.



Description	Proof Test Voltage AC/DC	Proof Test Voltage AC/DC	Cuff Style	Color	Length mm	inch	Sizes
<b>NOVAX CLASS OO</b> 2,500 Volt Tested 500 Volt Working	2,500 / 10,000	500 / 750*	Straight	Orange	360	14	7 • 8 • 9 • 10 • 11 • 12
<b>NOVAX CLASS O</b> 5,000 Volt Tested 1,000 Volt Working	5,000 / 20,000	1,000 / 1,500*	Straight	Orange	360	14	7 • 8 • 9 • 10 • 11 • 12
<b>NOVAX CLASS I</b> 10,000 Volt Tested 7,500 Volt Working	10,000 / 40,000	7,500 / 11,250*	Straight	Orange	360	14	7 • 8 • 9 • 10 • 11 • 12
<b>NOVAX CLASS 2</b> 20,000 Volt Tested 17,000 Volt Working	20,000 / 50,000	17,000 / 25,500*	Straight	Orange	360	14	7 • 8 • 9 • 10 • 11 • 12
<b>NOVAX CLASS 3</b> 30,000 Volt Tested 26,500 Volt Working	30,000 / 60,000	26,500 / 39,750*	Straight	Orange	410	16	9 • 10 • 11 • 12
<b>NOVAX CLASS 4</b> 40,000 Volt Tested 36,000 Volt Working	40,000 / 70,000	36,000 / 54,000*	Straight	Orange	410	16	9 • 10 • 11 • 12

\*Maximum use DC voltage is not part of any ASTM specification. Maximum use DC voltages are valid in reference to EN 60903 only.  
The contoured shape & softness hand fatigue. Every single NOVAX Glove is tested, inspected and packed according to the requirements in ASTM D120 and EN 60903. The gloves are numbered individually for traceability and stamped with the factory manufacturing date by ink stamp.



CE 0194



# NOVAX® LEATHER PROTECTION GLOVE

NOVAX® Leather Protector Gloves add an extra layer of safety for rubber insulating gloves. They are to be used only for mechanical protection against cuts, abrasions and punctures for rubber gloves and mittens. It should always be worn over NOVAX® Rubber Insulating Gloves to meet ASTM F696-06 standard. Our Leather Protector Gloves are manufactured from top grain cowhide or goatskin.

The 9.5" - 10" NOVAX® Leather Protector Gloves comes with zig zag elastic wrist while an adjustable nylon strop with buckle is equipped for longer gloves.



Class	00 & 0	1 & 2	3 & 4
Length	Approx 10"	Approx 12"	Approx 13"
Size	9, 10, 11, 12	9, 10, 11, 12	9, 10, 11, 12
Material	Goat Skin	Goat Skin with cow split leather gauntlet cuff	Goat Skin with cow split leather gauntlet cuff

## SAFETYWARE SDN BHD (632971-X)

Plot 237, Lengkok Perindustrian Bukit Minyak 3, Bukit Minyak Industrial Estate,  
14100 Simpang Ampat, Penang, Malaysia.

Tel: +604-5023 882 (8 lines) Fax: +604-5070 882

www.safetyware.com | info@safetyware.com

**Safetyware**  
SAFETYWARE GROUP  
Responsibility & Care