

SAFETYWARE UPDATES

APRIL - JUNE 2017

SAFETYWARE
NEWS
METALTECH
EXHIBITION 2017

THE TOP REASON EVERYONE SHOULD
KNOW CPR & AED

DO YOUR WORKPLACE EXPOSED
TO OCCUPATIONAL NOISE

ROAD SAFETY :
IT STARTS WITH YOU !

PROMOTION

Buy 10 pcs of Ultitec 500,
get another 5 pcs for free.

Vol. **2**



You are invited to Metaltech Exhibition 2017!

ASEAN Largest International Machine Tool & Metalworking Technology Exhibition

Date: 24 - 27 May, 2017

Venue: Putra World Trade Centre • Kuala Lumpur, Malaysia

Booth No.: 5210 (Hall 5)

Safetyware
SAFETYWARE GROUP
Responsibility & Care

Class up your Prints *with* **PREMIER CANVAS**

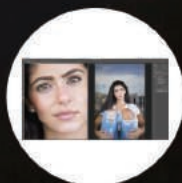
GET FANCY WITH CANVAS PRINT



MAKE YOUR
WALL POP !!



12 Sizes to
choose from!!



12 Sizes to
choose from!!



**Quick
sign**
Bring Your Message To Life

⌚ : <http://quicksign.com.my/>

f : QuickSign4U

QuickSign (previously known as Safetyware Industries) is a division of Safetyware which specializes in visual communication. QuickSign has evolved from a mere safety signage manufacturer to a full scale specialist in visual communication.

What started as a small printing section within the Safetyware Group has now grown into a complete

one-stop visual communication solution provider which encompass consultation, design, fabrication & manufacturing, as well as installation. Our factory is located at a 90,000 sq. ft site in Penang, equipped with state-of-the-art machineries & equipment such as HP Latex Printer, Plotter, Digital Flatbed Cutter, CNC Router & Laser Cutting/ Engraving machines.

COMING SOON

MAKE YOUR EVERY STEP SAFER



Premium Series



Queen Series



Ultranite Series



ESD Series



Do Your Workplace Exposed To Occupational Noise?

Exposure to high levels of noise can cause permanent hearing loss. Neither surgery nor a hearing aid can help correct this type of hearing loss. Short term exposure to loud noise can cause temporary change in hearing, but when it is a long term exposure to loud noise, it can lead to permanent tinnitus / hearing loss. Therefore, Noise Reduction Rating (NRR) for your hearing protector must be sufficient to provide the protection in your specific workplace environment.

NRR

A guideline that indicates the amount of potential protection a hearing protector will give in a noisy environment.

Table below shows permissible noise exposures of specific levels for specific period of time:

Duration Per Day (Hours)	Sound Level (dBA)
8	90
6	92
4	95
3	97
2	100
1.5	102
1	105
0.5	110
0.25	115

What will happen if continuous working under loud noise environment?

- Physical & psychological stress
- Reduce productivity
- Interface with communication & concentration
- Workplace accidents / injuries

Types of Hearing Protection

- Disposable Ear Plugs
- Reusable Ear Plugs
- Ear Muffs
- Communication Ear Muffs

Cleaning & Maintenance Method

- Hearing protectors should be cleaned regularly as the buildup of earwax & grease will shorten the product lifespan.
- Cleaned with mild soap & warm water.
- Do not use abrasive cleaning agent.

*For more accurate rating of NRR required in your workplace, you are welcomed to call us to provide more professional advices.

THE TOP REASON EVERYONE SHOULD KNOW CPR & AED

The American Heart Association states the following reasons for :
WHY IT IS IMPORTANT TO LEARN CPR/AED:

- **88%** of Cardiac Arrests happen in the home
- **Only 6.4%** of Cardiac Arrest Victims survive because people witnessing the incident do not know CPR
- **Over 200,000** people die of Sudden Cardiac Arrest every year
- **50,000** of the 200,000 deaths yearly could be prevented

According to the American Heart Association, 70% of Americans feel helpless to act during a cardiac emergency because either they do not know how to administer CPR, or their training has significantly lapsed. Referring to the statistics, 88% of cardiac arrests happen in the home, therefore CPR might be needed to save the life of your loved one.



CPR IS AN IMPORTANT SKILL TO HAVE. YOU CAN USE IT TO SAVE YOUR LIFE.

SO, WHY SHOULD YOU LEARN CPR

- Sudden cardiac arrest is not the same as a heart attack.
- Sudden cardiac arrest occurs when electrical impulses in the heart become rapid or chaotic, which causes the heart to suddenly stop beating.
- A heart attack occurs when the blood supply to part of the heart muscle is blocked. A heart attack may cause cardiac arrest.
- Effective bystander CPR provided immediately after sudden cardiac arrest can double or triple a victim's chance of survival, but only 32 percent of cardiac arrest victims get CPR from a bystander.
- Sadly, less than eight percent of people who suffer cardiac arrest outside the hospital survive.

**** Please contact us if you required any consultancy or training on First Aid, CPR & AED. ****

WHEN YOU CONCERN ABOUT SAFETY & HEALTH

Please call for quotation or laboratory visit

MY CO2 SDN BHD

Northern Hub (SAMM 384)
16, Lengkok Kikik 1,
Taman Indrawasih,
13600, Perai, Penang,
Malaysia.
T: +604-380 8282
F: +604-380 8280

MY CO2 (JB) SDN BHD

Southern Hub (SAMM 752)
15, Jalan Molek 1/8,
81100, Johor Bahru,
Johor, Malaysia
T: +607-355 8811
F: +607-355 9808

MY CO2 (KL) SDN BHD

Central Hub (SAMM 564)
40, Jalan Sepadu B25/B,
40400, Shah Alam,
Selangor, Malaysia
T: +603-5122 3366
F: +603-5122 3386

www.myco2.com.my





NOISE EXPOSURE MONITORING

To identify area and machinery noise level and noise exposure towards an individual.
Initial Noise Exposure Monitoring, Additional Noise Exposure Monitoring, Positive Noise Exposure Monitoring.

DOSH competency number :
JKKP HIE 127/5/3-1 (NO119) Factory & Machinery (Noise Exposure) Regulation 1989



PERSONAL EXPOSURE MONITORING

To evaluate the degree of chemical exposure towards employees such as Respirable Dust, Heavy Metals, Volatile Organic Compounds and etc.

DOSH competency number :
JKKP HIE 127/171-3/1 (173)



CHRA (CHEMICAL HEALTH RISK ASSESSMENT)

Identification of hazards posed by each chemical substance within the working space.
Evaluate Exposure, Control Measures and Health Risk.

DOSH competency number :
JKKP HIE 127/171-2(294)
USECCH Regulation 2000

HIRARC (HAZARD IDENTIFICATION, RISK ASSESSMENT, RISK CONTROL)
Identify all Factors that may cause harm to employee and other.
OSH-MS (MS 1772-2003)



LEV (LOCAL EXHAUST VENTILATION)

To inspect, test and examine engineering control equipment such as : Fumehood, Spray Booth, Capture Hood System etc.

DOSH competency number :
Reference to American Conference of Governmental Industrial Hygienists (ACGIH) Standard.



“ THE CHALLENGES OF LEADERSHIP DEVELOPMENT ”

by VA Partners



1. Key to Organization Growth

Leadership is a critical success factor in any organization in providing direction and inspiring growth. However, it is also a very challenging task in developing leaders with true leadership quality!

2. Challenges in Leadership Development

Leadership is a very wide subject. The basic fundamentals can be learnt through education and training, but experiential learning is necessary for further mastery.

An Anatomy of Integrated Leadership Learning Progression:-



Most leaders acquire leadership ability over the years from school, at work, at home and also through social activities. Continuous development is necessary to propel a leader to the highest level of a charismatic leader.

3. The VA SUPER Leadership Development Model

It is a practical model that covers 10 key aspects of Leadership encapsulated in 5 modules:

Self-management → Self-Leadership

Utilize Resources Masterfully → Unlimited

PDCA Methodology → Prepared as a Professional Executive

Energy → Execution

Result → Renewal for Sustainable Growth

* Self-management is the foundation of "Leadership by Example" and a person's first leadership role is to lead one-self first, hence Self-leadership.

Leaders have bigger than 'Self' role of effectively Utilizing various resources in the organization especially Human Resource. SUPER Leaders should master resource management and be able to think out of the box and be 'Unlimited' and resourceful in facing problems.

'PDCA' methodology is a universal tool for planning and management that leaders should use effectively and move on to be more Professional !

All the forgoing will be given a real boost if leaders are able to nurture teams with positive Energy for effective Execution.

Finally, 'Result' means getting the right result through performance management and able to sustain performance both in the short term and long term through Renewal to stay fresh and stay abreast with changes.

4. Conclusion

The 'SUPER' Leadership model is not a complete leadership learning model, but it is an integrated and practical approach that covers the key aspects of leadership development for organisation development.

Public Training 2017

SUPER Leadership Development Series (Express Course)

12th April - Module 1

26th April - Module 2

03rd May - Module 3

17th May - Module 4

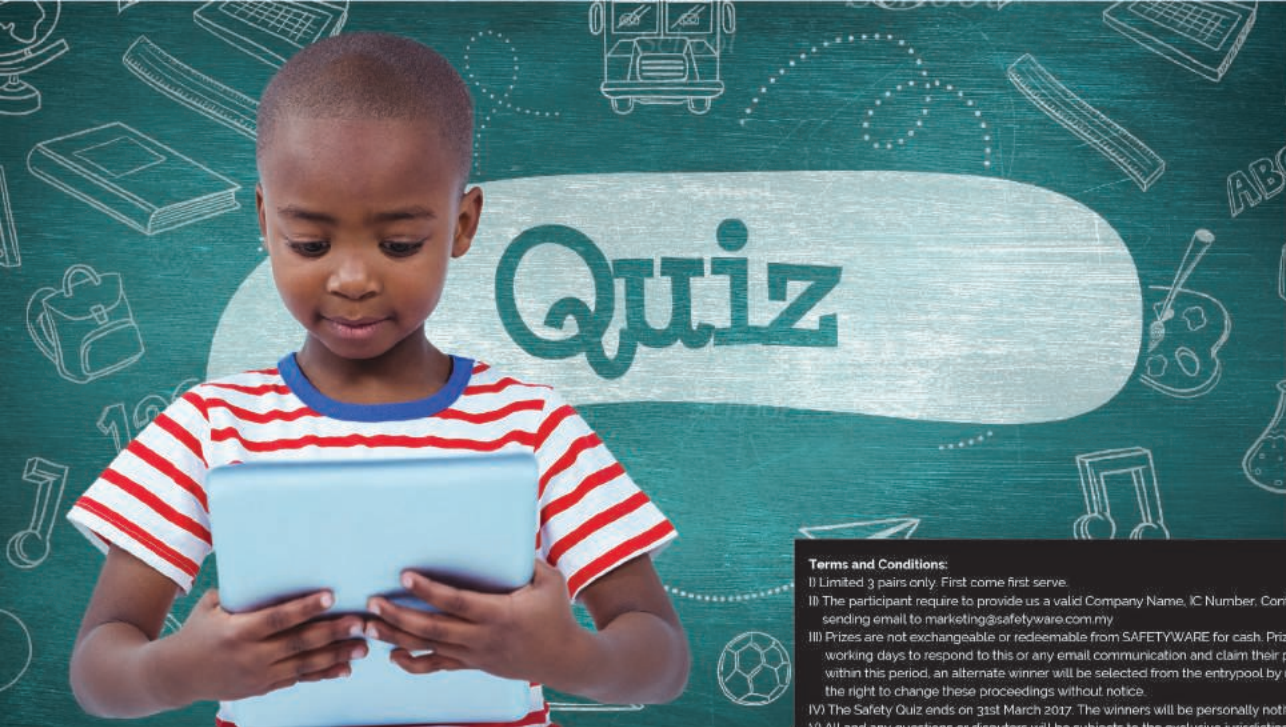
24th May - Module 5



by **Mr Well Kam Lian Hooi**
AMA Certified Trainer
Founder/Director, VA Partners
Group of Companies

Objectives:

- To enable participants to develop both conceptual and practical skills in leadership.
- To transform participants into more effective leaders, with strong basics and an extended bridge for excellence.



Terms and Conditions:

- I) Limited to pairs only. First come first serve.
- II) The participant require to provide us a valid Company Name, IC Number, Contact Details and Correct Answer by sending email to marketing@safetyware.com.my
- III) Prizes are not exchangeable or redeemable from SAFETYWARE for cash. Prize winners will be given a period of 7 working days to respond to this or any email communication and claim their prize. If the prize winner does not respond within this period, an alternate winner will be selected from the entrypool by random selection. SAFETYWARE reserve the right to change these proceedings without notice.
- IV) The Safety Quiz ends on 31st March 2017. The winners will be personally notified.
- V) All and any questions or disputes will be subjects to the exclusive jurisdiction of the SAFETYWARE Management.

**** Win a Safety Shoe Worth RM180.00 ****



(C-201SP)

1. What is the leading cause of death on construction sites?

- a. Struck by object
- b. Falls
- c. Electrocutions
- d. Caught-on or -between

2. Which of the following is a chemical-related health hazard?

- a. Sensitizer
- b. Irritant
- c. Corrosive
- d. All above

3. If you wanted to convey the most severe type of hazard, which word would you use?

- a. Danger
- b. Caution
- c. Notice
- d. Warning

4. Which of these is not a power tool safety precaution?

- a. Never carry tool by the cord or hose
- b. Never yank the cord or the hose to disconnect it from the receptacle
- c. Keep tools plugged in when not in use, before servicing and when changing accessories such as blades, bits and cutters
- d. Keep cords and hoses away from heat, oil and sharp edges

5. The Occupational Safety & Health Administration requires employers to have Hearing Conservation Plans if the average 8-hour noise exposure is more than:

- a. 1000 decibels
- b. 500 decibels
- c. 100 decibels
- d. 85 decibels

6. Exposure to high levels of noise can lead to which of the following:

- a. Gastrointestinal problems
- b. High blood pressure
- c. Chronic fatigue
- d. All of the above

7. How often should ladders be inspected?

- a. Before each use
- b. Once a week
- c. Once a month
- d. Half year

8. OSHA prohibits working on a scaffold in the presence of winds above:

- a. 10 mph
- b. 20 mph
- c. 30 mph
- d. 40 mph

9. If you fall, you should:

- a. Tuck in your chin and turn your head
- b. Bend your wrists, knees and elbows
- c. Never try to break your fall with your hands
- d. All of the above

10. If you are driving a forklift and it begins to tip over, you should:

- a. Jump out immediately
- b. Stay in the vehicle with your seatbelt fastened
- c. Stay in the vehicle with your seatbelt unfastened
- d. Stand up with a tight grip on the steering wheel

11. While lowering a load with a forklift, you should not do which of the following?

- a. Tilt the mast backward to stabilize the load
- b. Stop the truck and put the mast to vertical position
- c. Move the truck 8-12 feet away from the stack
- d. Lower the load so that its lowest point is 6-8 inches from the ground

12. On which of the following types of surfaces should a Class B fire extinguisher not be used?

- a. Oil
- b. Plastic
- c. Grease
- d. Lacquers

13. On which of the following types of surface should a Class A fire extinguisher not be used?

- a. Wood
- b. Cloth
- c. Paper
- d. Electrical equipment

14. If you wear a back support belt, you can lift more weight than you could without a belt.

- a. True
- b. False

15. The acronym "PASS" used for fire extinguisher operation stands for:

- a. Pull, Aim, Squeeze, Sweep
- b. Pick Up, Aim, Squeeze, Squirt
- c. Push, Aim, Squeeze, Sweep
- d. Pull, Aim, Squeeze, Swat



RM 499 Report will be provided

EHS ASSESSMENT

We provide EHS Assessment for you...
Don't miss it out!!!

WHY IS SAFETY ASSESSMENT IMPORTANT?

Safety assessments are very important as they form an integral part of an occupational health and safety management plan. They help to:

- Create awareness of hazards and risk.
- Identify who may be at risk
- Determine whether a control program is required for a particular hazard.
- Determine if existing control measures are adequate or if more should be done.
- Prevent injuries or illnesses, especially when done at the design or planning stage.
- Prioritize hazards and control measures.
- Meet legal requirements where applicable.

The main aim is to make sure that no one gets hurt or becomes ill. Accidents and ill health can ruin lives, and can also affect business if output is lost, machinery is damaged, insurance costs increase, or if you have to go to court. Hence, it is important to carry out a Risk Assessment and prepare a Safety Statement for:

FINANCIAL REASONS:

There is considerable evidence, borne out by companies' practical experiences that effective safety and health management in the workplace contributes to business success. Accidents and ill-health inflict significant costs, often hidden and underestimated.

LEGAL REASONS:

There is considerable evidence, borne out by companies' practical experiences that effective safety and health management in the workplace contributes to business success. Accidents and ill-health inflict significant costs, often hidden and underestimated.

Kindly contact us to schedule your EHS Assessment
04-5023882 (Ms Yee Ju) or email to ehs@safetyware.com.my

ROAD SAFETY: IT STARTS WITH YOU!

Road safety: It starts with you! Yes, it takes yourself in the first place in making a difference. Basically, all road users have a responsibility to keep our roads safe and secure. In addition, it appears that the University of Michigan has listed Malaysia as the 17th most dangerous country for road users. Thus, it is imperative for all road users to be well versed and act accordingly for the betterment of oneself and others simultaneously. Below are five essential tips of road safety.



SAFETY FIRST

Check the condition of your vehicle

Before you start your journey, it is highly advisable to check the condition of your vehicle first whether it is in a good order or vice versa. This is a first step in ensuring the road user is proactive towards the importance of road safety. You may check the condition of all tires and exhaust system, lights and indicators, windscreen wipers and brakes all are all right and in a good state.

Plan your journey/trip

As a good road user, one of the key features is to plan your journey or trip a few days ahead. This is to give you more time to check the condition of your vehicle, the route that you may take for the journey and perhaps you may need some additional safety tools or assistance prior to using the chosen route for that journey. Things happen and so does accidents. Plan your journey wisely.

Follow the rules

It is mandatory for road users to abide by the rules and regulations that has been implemented for the sake of road safety. For examples, wearing seat belts, no mobile phone while driving, no drinking and take a break if you are exhausted. In addition, the drivers also need to ensure that all his family members are well versed about the rules of road safety for example all need to buckle up before we start the journey.

Be aware of your surroundings

It is crucial for road users to be aware of his surroundings while driving. It means that they need to be flexible and practical upon any circumstances that might happen and able to make a swift maneuver when facing the challenges. Road users also need to be aware of their surroundings in terms of the behavior of other road users for example drivers of heavy trucks, buses, pedestrians and motorcyclist.

Attitude of drivers

Road users must follow all the traffic rules, signs and signals that have been implemented for the sake of road safety. They usually drive at a safe speed and signal in advance when turning or changing lanes. Another attitude of good road users are they give way to emergency vehicles such as ambulances and police cars, do not tailgate and do not overtake unless the road is clear and safe to do so.

As a conclusion, every road users is responsible towards one another. Our attitude determined our behavior and that behavior could safe or kill someone else. It is crucial for each of road users to be aware of the rules and regulations and implement those acts within oneself. Remember, to change this, it is all starts with you!

LIFE DON'T HAVE RESET BUTTON.
DRIVE SAFE

BE SEEN, BE SAFE



SV-CD-1MVY



SV-2R-4MVO



SV-2R-1KZY



SV-4R-1KZO

** Please contact us for more different design and different materials **

TOLL FREE 1300 22 3882

ULTITEC 2000



Features:

- Chemical liquid (EN368) and blood (ASTM F1670) penetration resistance for premium protection.
- EN14126 - protection against biological hazards and infective agents. (TYPE 5-B, 6-B)
- Low linting to reduce the risk of contamination in environment.
- Class 6/6 of ISO 16603 - Resistance of penetration by blood and body fluids. (Synthetic blood)
- Class 2/6 of ISO 16604 - Resistance of penetration by blood-borne pathogens. (Phi-X-174)
- Achieves ISO Class 6 and above cleanroom standard at the Helmke Drum test.

Material:

- Suit: SF63E-HAS-WH/WH Fabric
- Zipper: Nylon on Polyester Braid
- Elastic: Neoprene Rubber (latex free)
- Thread: Polyester
- Basic Weight: 63gsm

Applications:

- Asbestos Handling
- Automotive
- Chemical Handling
- Electronics
- Hazardous Material
- Paint Spray
- Agriculture & Farming
- Biological Hazards
- Clean Room
- Engineering
- Military
- Printing

Storage & Disposal:

- Store in dry & clean conditions in original packaging
- Keep it away from direct sunlight, sources of high temperature and solvent vapours.
- Temperature range of storage location: -20°C to +25°C (-4°F to +68°F)
- Replace the coverall if damaged, heavily contaminated or in accordance with local work place.
- Handle and dispose of contaminated garments with care and in accordance with national regulations.

Do Not:

- Contact with heavy oils, sparks or flames, or combustible liquids.
- Use in exposure situations resulting in spray or liquid buildup on the suit.
- Use in environments with high mechanical risks. (abrasions, tears, cuts)
- Use in environments with conditions of excessive heat.
- Use in environments with exposure to hazardous substances beyond CE Type 5/6 certification.

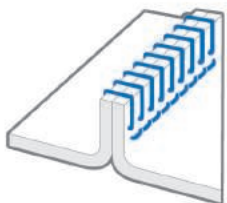
Colour:

- White

Safety Standard:

- CE Category III
- Type 5-B & Type 6-B

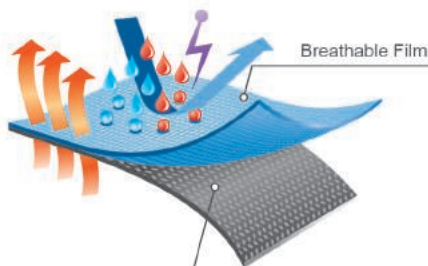
Seam Construction



Stitched Seam

Reinforced 4-thread overlapped seam offers stronger seam strength and better protection.

Fabric Construction



Spunbonded Polypropylene

ULTITEC
2000



BUY 3_{PCS} OF
ULTITEC 2000,
GET 1_{PCS}
ULTITEC 2000B
FOR FREE.

ULTITEC 2000 provides great protection against chemical liquid spray, while remaining breathable and comfortable wearing experience, ideal for wide range of industrial applications.

** Term & Condition Apply
** While Stock Last

S.H.E UPDATES

APRIL- JUNE 2017



S.H.E Alliance
SAFETY . HEALTH . ENVIRONMENT

www.shealliance.net

S.H.E is a strategic alliance between three leading companies in the Safety, Health and Environment field. S.H.E Alliance increase customers's awarness toward Safety, Health and Environment, help customer to prevent incidents or accidents that might result from abnormal operating conditions on the one hand and reduction of adverse effects that result from normal operating conditions on the other hand.



SAFETYWARE GROUP

Safetyware Sdn. Bhd. (632971-X)
Safetyware EHS Consultancy Sdn. Bhd. (954196-M)
Safetyware (SG) Pte Ltd (201208598R)
Safetyware (UK) Limited (8533248)

Email : info@safetyware.com
Website : www.safetyware.com/



Penang Head Office
Plot 237, Lengkok Perindustrian Bukit Minyak 3, Bukit Minyak Industrial Estate, 14100 Simpang Ampat, Penang, Malaysia.
T : +604-5023 882 (8 lines)
F : +604-5081 882

Kuala Lumpur Office
Strium M1-16-08 Menara 1, Lot 62539, Jalan Cempaka SD 12/5, Bandar Sri Damansara, 52200 Kuala Lumpur, Malaysia.
T : +603-6262 0882 (4 Lines)
F : +603-6270 0393

Johor Office
G37, Jalan Austin Perdana 2/22, Taman Austin Perdana, 81100 Johor Bahru, Johor, Malaysia.
T : +607-3576 882 (3 Lines)
F : +607-3577 882

Melaka Office
No. 18-1, Jalan PPM 4, Plaza Pandan Malim, 75250 Melaka, Malaysia.
T : +606-3363 882 (2 Lines)
F : +606-3375 881



Singapore Office
53 Ubi Ave 1, #01-41 (2A), Paya Ubi Industrial Park, Singapore 408934.
T : +65 67440882
F : +65 68420882



United Kingdom Office
Office 4, 219 Kensington High Street, London, United Kingdom, W8 6BD.
T : +44 2032863882
F : +44 8458520882



MY CO2 GROUP

MY CO2 Sdn. Bhd. (744438-M)
MY CO2 (KL) Sdn. Bhd. (1155142-M)
MY CO2 (JB) Sdn. Bhd. (1155302-A)
(GST No. 000462 401 536)

Email : enquiry@myco2.com.my
Website : www.myco2.com.my

Northern Hub (SAMM 384)
16, Lengkok Kikik 1, Taman Inderawasih, 13600 Perai, Penang, Malaysia.
T : +604 - 380 8282
F : +604 - 380 8280

Central Hub (SAMM 564)
40, Jalan Sepadu B25/b, 40400 Shah Alam, Selangor, Malaysia.
T : +603 - 5122 3366
F : +603 - 5122 3386

Northern Hub (SAMM 752)
15, Jalan Molek 1/8, Taman Molek, 81100 Johor Bharu, Malaysia.
T : +607 - 355 8811
F : +607 - 355 9808



VA GROUP

VA Learning Sdn Bhd
(CO. No. 1050469-M)
VA Resources Sdn Bhd
(CO. No. 847799-K)
VA WellGarden Sdn Bhd
(CO. No. 1034162-T)

Email : enquiry@vapartners.com.my
Website : www.vapartners.com.my

VA Learning & Wellness Centre
488 D-04-06 & 10, One-Stop Centre, Midlands Park, Jalan Burmah, 10350, Penang, Malaysia.
T : +604 2288359
F : +604 2275043