

PRESS RELEASE

YONG AI ORPHANAGE CHRISTMAS CELEBRATION

26th November 2016, Kulim – Safetyware Sdn. Bhd. organised a Christmas Celebration in Yong Ai Orphanage to bring joy and fun together with the orphans. There are a total of 12 children from the orphanage and 20 staffs from Safetyware took part in this joyful event.

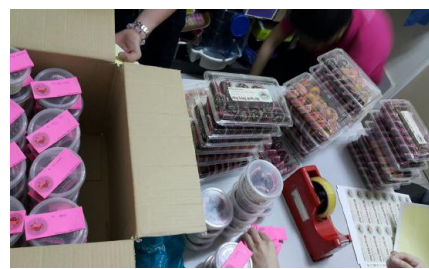
This Christmas Celebration was organized by WOW Club from Safetyware Sdn. Bhd. The objective of WOW Club is to be active in the social, cultural and moral welfare of the community. Before this event, Team Corporate Social Responsibilities (CSR) from Safetyware WOW Club had conducted few more activities like selling homemade cupcakes, collecting recycling items and also located a donation box in the office to collect funds for the orphanage. Besides that, we also donate out RM1 for each box of N95 respiratory masks being sold. In between the event, we successfully sold 2491 boxes of masks which means there will be RM2491 donation funds. With all the fund raising activities conducted, we have successfully funded RM5000 and donated to the Yong Ai Orphanage.

During the Christmas Celebration, we played some group activities like build a paper car, station games and also exchange gifts session. The cheque of donated funds, RM5000 was passed to the person-in-charge. It was a happy and memorable day, which will always be remembered.

About Safetyware Group

Safetyware group is one of the leading integrated occupational health and safety specialists in Asia, where we design, manufacture, distribute and export full range of safety solutions with more than 30 years of experience. With factory and offices in Malaysia, Singapore and United Kingdom, Safetyware operates three main business divisions namely PPE Distribution, Manufacturing and EHS Consultancy.

For more information, please visit www.safetyware.com



Selling Mini Cupcakes as Fund-raising



Recycling & Donation Box



Building Paper Car



Station Games



Gift Exchange



Cheque Giving Ceremony & Souvenir Giving